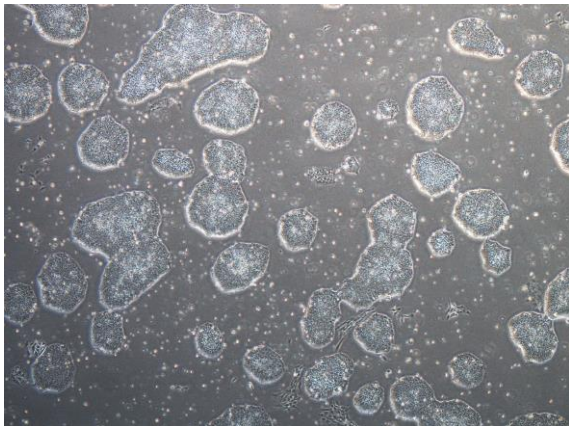
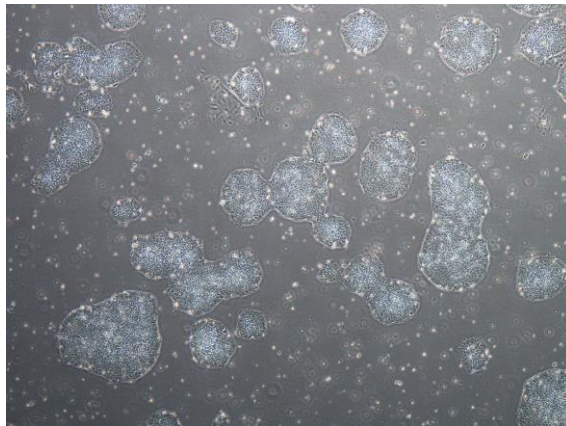


## 【 CiRA-j-1162 】 Morphology of iPSC colonies

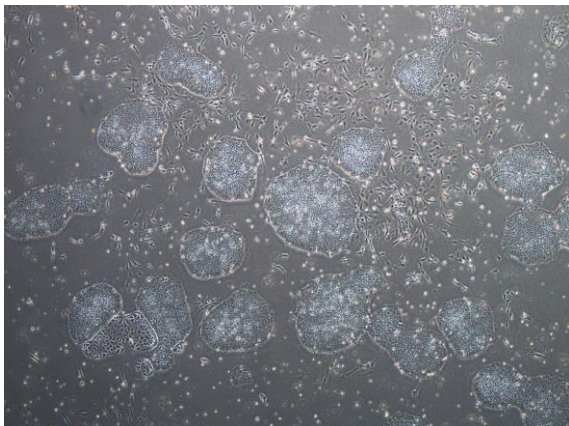
CiRA-j-1162-A: passage-3



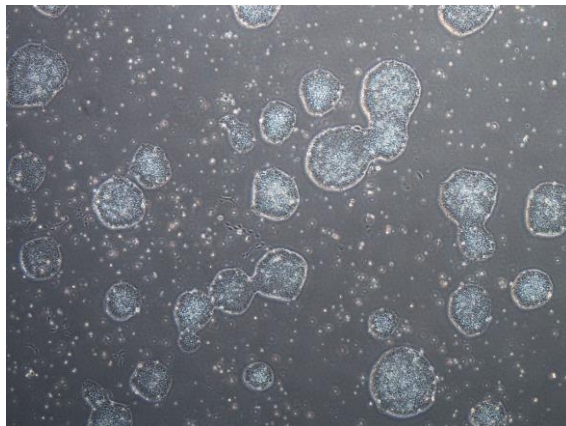
CiRA-j-1162-B: passage-3



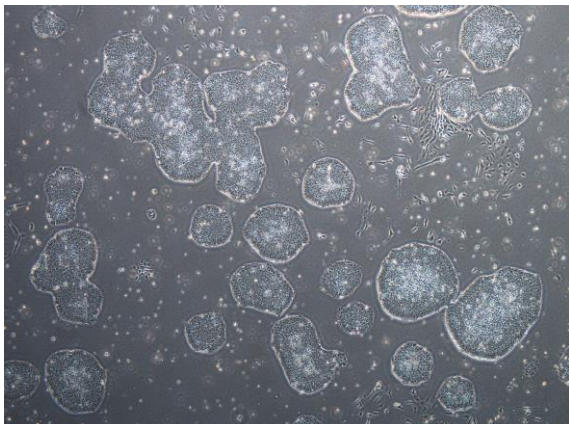
CiRA-j-1162-C: passage-3



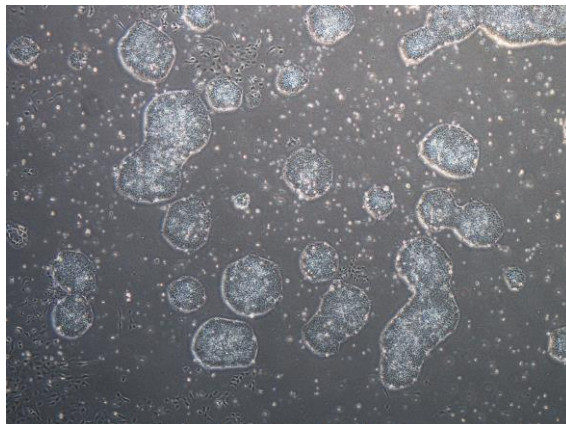
CiRA-j-1162-D: passage-3



CiRA-j-1162-E: passage-3



CiRA-j-1162-F: passage-3



( All images were captured at 4x magnification )